

The range | 2000 series

Single-use folding masks



Models	2110	2111	2210	2211	2311
References	M/L Ref.: 10 315 90	M/L Ref.: 10 315 91	M/L Ref.: 10 315 92	M/L Ref.: 10 315 93	M/L Ref.: 10 315 94
FFP classification	FFP1 NR* D**	FFP1 NR* D**	FFP2 NR* D**	FFP2 NR* D**	FFP3 NR* D**
Exhalation valve	No	Yes	No	Yes	Yes
Willtech seal	Yes	Yes	Yes	Yes	Yes
Straps	Elastic	Elastic	Elastic	Elastic	Elastic
NPF***	4	4	12	12	50
Dolomite tested D**	Yes	Yes	Yes	Yes	Yes
Packaging	25 / box	20 / box	25 / box	20 / box	20 / box

* NR : Not reusable** D : Dolomite tested*** FNP : Nominal protection factor - Refer to the regulatory standards in your country and/or the instruction leaflet.

All our models fulfill the criteria:

CE 0194 EN 149:2001+A1:2009

More eco-friendly and hypoallergenic:



HONEYWELL SAFETY PRODUCTS

SPERIAN PROTECTION (UK) LIMITED

Unit 3 Elmwood, Chineham Park,
Basingstoke, RG24 8WG
Phone: +44 (0) 1256 693 200
Fax: +44 (0) 1256 693 300
Email: info-uk.hsp@honeywell.com
International: info-export.hsp@honeywell.com

www.honeywellsafety.com

DOC3122
December 2012
© 2012 Honeywell International Inc.

Lead them to safety — Build an enduring culture of safety through comprehensive education, innovative technologies, and comfortable, high-performance products. Honeywell Safety Products is the ideal partner for a cultural transformation that inspires workers to make safer choices on their own.

2000 Series single-use folding masks

Honeywell



AN ERGONOMIC DESIGN FOR COMFORT
AND OPTIMUM PROTECTION

Because your protection is important!

Honeywell

An innovative design

The new 2000 series mask is ergonomically designed to provide comfort and optimum protection.

PANORAMIC FIELD OF VISION

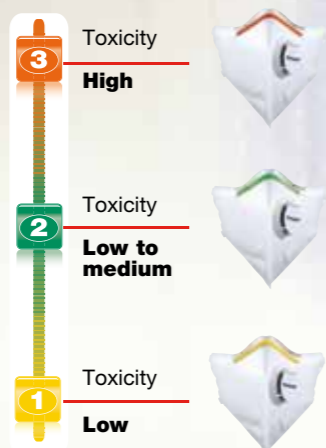
It is cut away around the eyes to increase the field of vision and make it easier to wear in combination with safety eyewear. The wider field of vision enables users to carry out their activities in complete safety, including those requiring the user to lower his head.



AN ORIGINAL NOSE BRIDGE

The ultra flat and coated nose bridge can be easily adjusted to ensure it is perfectly sealed, while the colour coding makes it easy to identify the classification of the mask within the standard.

FFP CLASSIFICATION



THE 2000 SERIES MASK FITS THE FACE PERFECTLY

It provides an excellent leak-tight seal and prevents toxic particles from entering the mask. Tested by users with different face shapes, it adapts to a wide variety of facial shapes and sizes thanks to its triangular design, to guarantee protection and comfort.

The innovative design means larger interior volume, providing increased respiratory comfort to users.

Exceptional comfort

So soft, lightweight and ergonomic that the user forgets they are wearing a mask, it's just like a second skin: they can work efficiently all day long.

THE WILLTECH FACE SEAL™

The hypoallergenic and anti-perspirant Willtech seal is composed of 3 layers: polyester fabric, polyurethane foam and polyethylene film. It absorbs perspiration and provides the user with a seal that is perfectly leak-tight. It prevents the risk of irritation and is soft on the skin for greater comfort.

ADVANTAGES OF THREE LAYER WILLTECH™ SEAL

- 1 Polyester fabric = soft
- 2 Polyurethane foam = Anti-perspirant
- 3 Polyethylene film = Air-tight



THE WELDED BRAIDED STRAPS

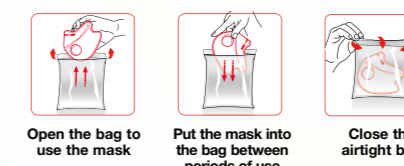
The welded braided straps help prevent irritation at the fixing point.

2000 series

Single-use folding masks

REUSABLE INDIVIDUAL BAG

Individual bags not only protect the masks from contamination prior to use, but also during the day by storing them in the airtight bag.



UNBEATABLY SOFT

The very soft inner lining material provides optimum comfort around the entire edge of the mask.

ULTRA LIGHT

These lightweight masks, from 7g to 14g, reduce user fatigue throughout the day.