

clinell®

www.clinell.com

EFFECTIVE IN
AS LITTLE AS
10 SECONDS



UNIVERSAL WIPES

FOR CLEANING & DISINFECTING SURFACES,
HANDS AND EQUIPMENT

Multi-purpose

Soft, strong and thick wipes can be used to disinfect hands and surfaces.

Proven efficacy

Kills at least 99.99% of bacteria and viruses from as quickly as 10 seconds

Dermatologically tested

Contains aloe vera and moisturisers to be gentle on skin.

Proven efficacy against:

MRSA, *Klebsiella*, *E. coli*, *Pseudomonas*, Norovirus, Coronavirus and many more.

Antimicrobial wipes for cleaning & disinfecting surfaces, hands and equipment



Kills at least 99.99% of bacteria and viruses including Coronavirus.

- ✓ Multipurpose cleaning and disinfecting solution
- ✓ Effective in 10 seconds
- ✓ Kills at least 99.99% of bacteria and viruses
- ✓ Can be used on visibly dirty hands, unlike alcohol gels
- ✓ Ideal for moments when you don't have access to soap & water



ON HANDS



TABLETS/PHONES



DOOR HANDLES



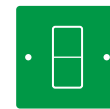
KEYBOARDS



KITCHENS



WAITING ROOMS



LIGHT SWITCHES



BATHROOMS

INSTRUCTIONS FOR USE ON HANDS

Wipe hands thoroughly for 60 seconds.



1. Rub hands palm to palm.



2. Rub back of each hand with the palm of other hand, fingers interlaced.



3. Rub palm to palm with fingers interlaced.



4. Rub with backs of fingers to opposing palms with fingers interlocked.



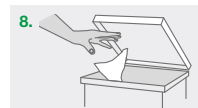
5. Rub each thumb clasped in opposite hand using rotational movement.



6. Rub tips of fingers in opposite palm in a circular motion.



7. Rub each wrist with opposite hand.



8. Discard the wipe in the appropriate waste bin.

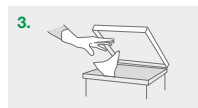
INSTRUCTIONS FOR USE ON SURFACES



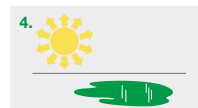
1. Remove one wipe from the pack.



2. Wipe in an 'S' shaped pattern from clean to dirty.



3. Discard the wipe in the appropriate waste bin.



4. Allow to air dry.

| | |
|---|---|
| BACTERIA <i>Staphylococcus aureus</i> (MRSA) <i>Klebsiella pneumoniae</i> (ESBL) <i>Staphylococcus aureus</i> <i>Enterobacteriaceae</i> (CRE) <i>Escherichia coli</i> <i>Listeria monocytogenes</i> <i>Campylobacter jejuni</i> <i>Pseudomonas aeruginosa</i> <i>Acinetobacter baumannii</i> <i>Salmonella typhimurium</i> | TEST EN13727 EN13727 EN13727 EN13727 EN13727 EN13727 EN13727 EN13727 EN13727 EN13727 |
| MYCOBACTERIA <i>Mycobacterium smegmatis</i> <i>Mycobacterium terrae</i> | EN14348 EN14348 |
| YEASTS AND FUNGI <i>Aspergillus brasiliensis</i> <i>Candida albicans</i> <i>Candida auris</i> | EN16615 EN13624 EN13624 |
| VIRUSES Adenovirus Influenza (H1N1) Norovirus Hepatitis B Hepatitis C MERSCoV (Human Coronavirus) | EN14476 EN14476 EN14476 EN14476 EN14476 EN14476 |
| HAND ANTISEPTIC TESTING Hygienic handrub | EN 1500 |

| PRODUCT | UNIT OF ISSUE | WIPE SIZE | LID TYPE | PRODUCT CODE |
|-----------------------------|---------------|-----------|------------------|--------------|
| Universal Wipes 72 (40gsm) | Pack of 72 | 19 x 15cm | Resealable label | BCW72 |
| Universal Wipes 100 (60gsm) | Pack of 100 | 26 x 18cm | Plastic lid | BCW100 |

Use biocides safely. Always read the label and product information before use.